

**Motor 4b - MSC 14:1 Gearbox with adaptor
to fit ESCAP 34L11 - 219E**

E3-A. Drg 4b 9/85

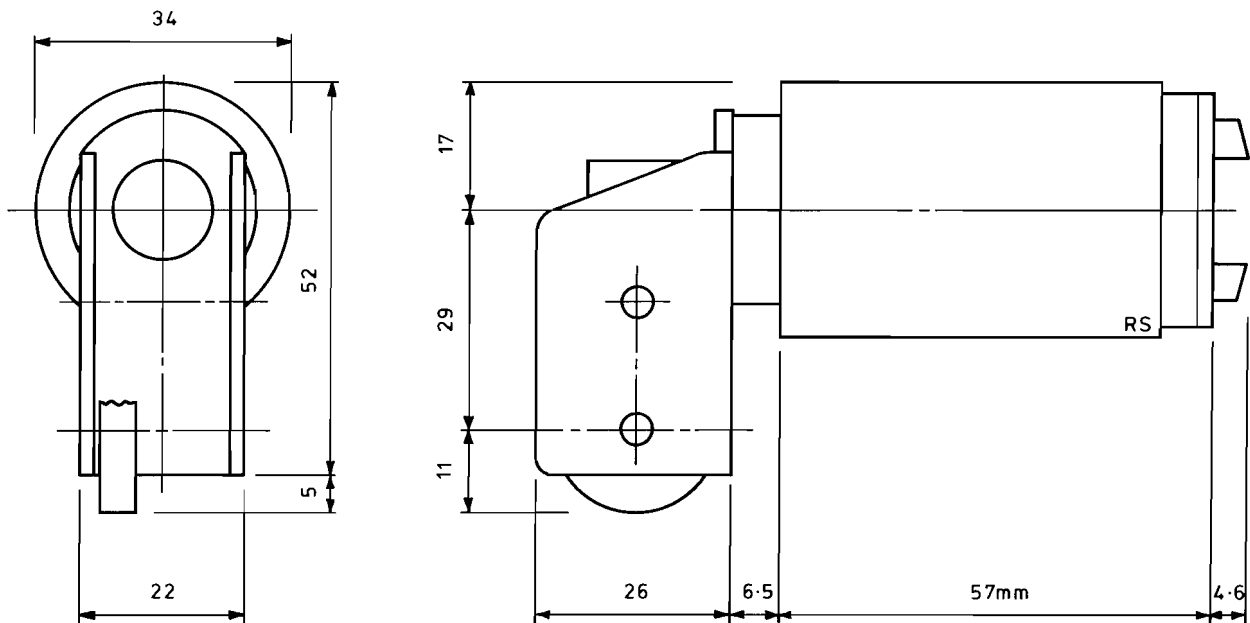
Motor details: Nominal voltage - 24 volts. No load speed - 5400 rpm. Stalled current - 1.5 amps. Stalled torque - 1080 gram cm. Maximum recommended continuous current - 0.8 amps.

Gearbox: Efficiency - 40% (Worm end thrust taken by ball races). Driving axle speed - 385 rpm.

Comment: This combination gives an exceptionally high tractive effort together with a good speed range suitable for all classes of locomotive.

Data source: Manufacturer's data sheets.

Available from B McIntee, 135 Old Church Lane, Stanmore, Middlesex HA7 2RT.



SEE REVERSE FOR GRAPH

